

# The Quebec

## Bungalow - 883 Sq. Ft.

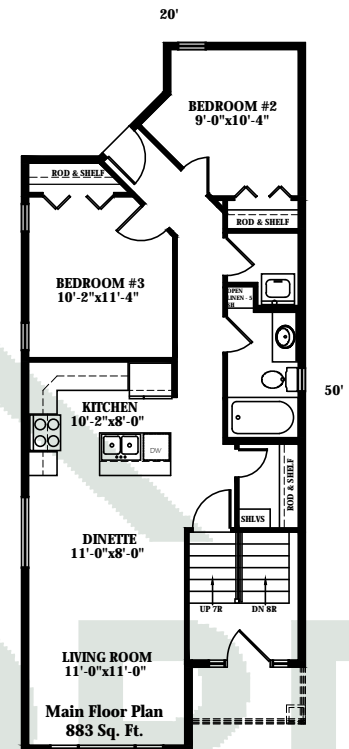


### STANDARD FEATURES:

- ✓ 2 bedroom narrow lot layout
- ✓ Sunken foyer
- ✓ Main floor laundry
- ✓ Efficient kitchen layout w/ eat up counter
- ✓ Roomy dinette
- ✓ Covered entry

### OPTIONAL FEATURES:

- ✓ Fireplace to living room
- ✓ Basement development



### For more information contact

Doug	Lori	Al
Giesbrecht	Van Woert	Giesbrecht
306-529-6161	306-737-1070	306-737-2863

[www.giesbrechtteam.ca](http://www.giesbrechtteam.ca)



progressive  
HOME WARRANTY SOLUTIONS INC.



Crawford Homes Limited

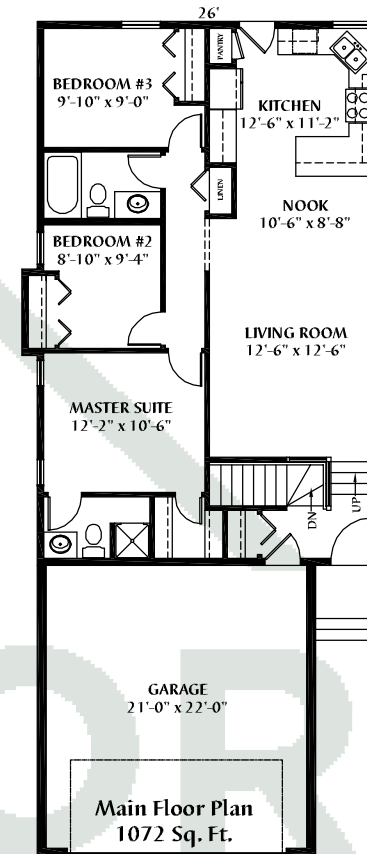
Regina, Canada

# The B-52

Bungalow - 1072 Sq. Ft.



ARTIST'S REPRESENTATION - EXTERIOR MAY VARY



## STANDARD FEATURES:

- ✓ 3 bedrooms
- ✓ 2 bathrooms
- ✓ Open floor plan
- ✓ Efficient kitchen layout c/w corner sink
- ✓ Covered entry
- ✓ Direct access from garage
- ✓ 21' x 22' garage

## OPTIONAL FEATURES:

- ✓ Basement development

## For more information contact

Doug	Lori	Al
Giesbrecht	Van Woert	Giesbrecht
306-529-6161	306-737-1070	306-737-2863

[www.giesbrechtteam.ca](http://www.giesbrechtteam.ca)



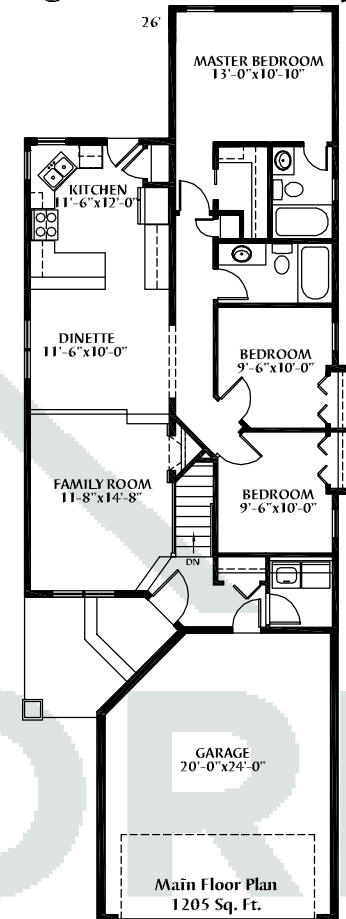
Crawford Homes Limited

Regina, Canada

# The Padwick Bungalow - 1205 Sq. Ft.



ARTIST'S REPRESENTATION - EXTERIOR MAY VARY



## STANDARD FEATURES:

- ✓ 3 bedroom narrow lot layout
- ✓ Sunken foyer
- ✓ Sunken family room
- ✓ Main floor laundry
- ✓ Efficient kitchen layout w/ eat up counter
- ✓ Roomy dinette
- ✓ Covered entry
- ✓ Master bedroom includes 3pc. ensuite and large walk-in closet
- ✓ 20' x 24' garage

## OPTIONAL FEATURES:

- ✓ Fireplace to family room
- ✓ Basement development

## For more information contact

Doug Giesbrecht 306-529-6161	Lori Van Woert 306-737-1070	Al Giesbrecht 306-737-2863
------------------------------------	-----------------------------------	----------------------------------

[www.giesbrechtteam.ca](http://www.giesbrechtteam.ca)

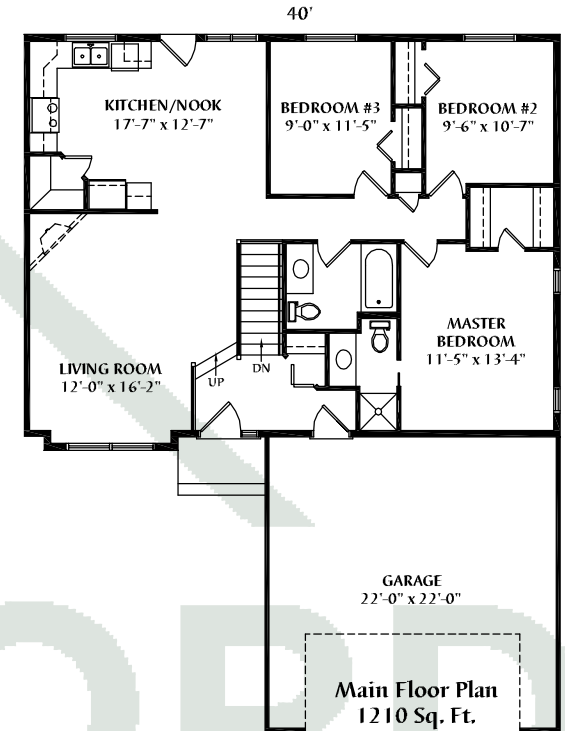


Crawford Homes Limited

Regina, Canada

# The Duchess

## Bungalow-1210 Sq. Ft.



### STANDARD FEATURES:

- ✓ Large open foyer
- ✓ Open stairwell c/w wood railing
- ✓ Open kitchen highlights a corner walk-in pantry
- ✓ French door from nook to future deck
- ✓ Master bedroom c/w 3 pc. bath & walk-in closet
- ✓ Direct access from garage to house
- ✓ 22' x 22' garage

### OPTIONAL FEATURES:

- ✓ Fireplace
- ✓ Sunken living room
- ✓ Bayed out nook
- ✓ Cathedral ceiling
- ✓ 3rd garage bay
- ✓ Basement development

### For more information contact

Doug	Lori	Al
Giesbrecht	Van Woert	Giesbrecht
306-529-6161	306-737-1070	306-737-2863

[www.giesbrechtteam.ca](http://www.giesbrechtteam.ca)



Crawford Homes Limited

Regina, Canada

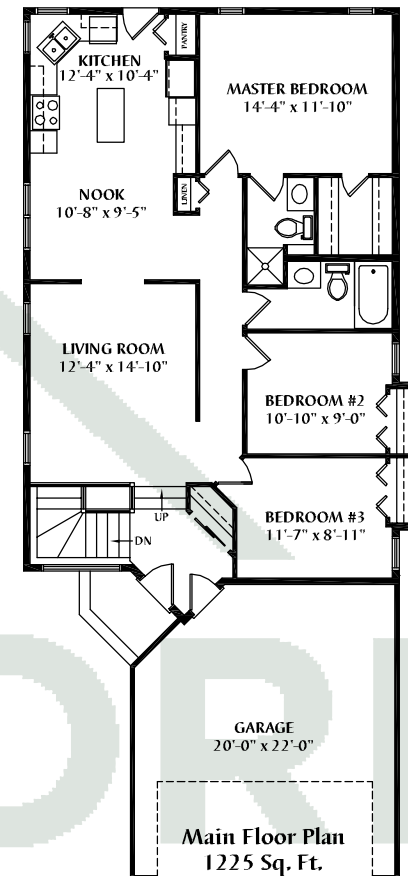
# The Marian

## Bungalow - 1225 Sq. Ft.

28'



ARTIST'S REPRESENTATION - EXTERIOR MAY VARY



### STANDARD FEATURES:

- ✓ 3 bedroom open floor plan
- ✓ Cathedral ceiling
- ✓ Large sunken foyer
- ✓ Beautiful open staircase
- ✓ Huge front window over stairwell c/w transom window
- ✓ Large living room c/w archway into dining nook
- ✓ Modern kitchen features an island & a handy telephone desk
- ✓ Single french door from kitchen onto future deck
- ✓ Master bedroom c/w 3 pc. ensuite & walk-in closet
- ✓ Direct access from garage
- ✓ 20' x 22' attached garage

### OPTIONAL FEATURES:

- ✓ Fireplace
- ✓ Larger garage
- ✓ Basement development

### For more information contact

Doug	Lori	Al
Giesbrecht	Van Woert	Giesbrecht
306-529-6161	306-737-1070	306-737-2863

[www.giesbrechtteam.ca](http://www.giesbrechtteam.ca)



progressive  
HOME WARRANTY SOLUTIONS INC.



Crawford Homes Limited

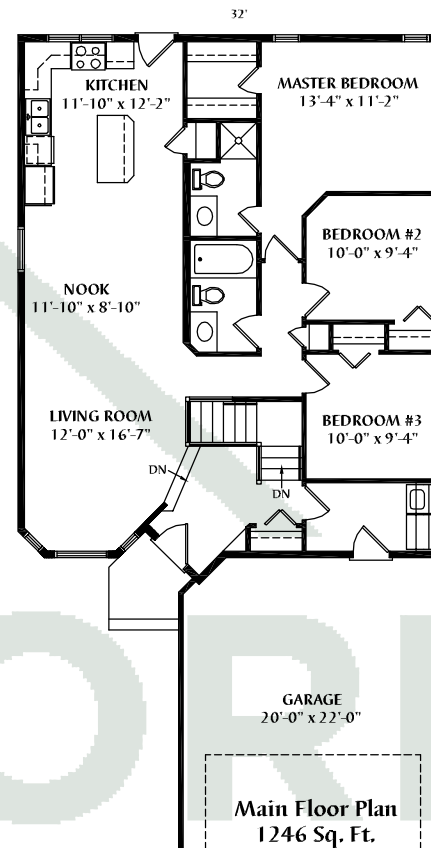
Regina, Canada

# The Madison

Bungalow - 1246 Sq. Ft.



ARTIST'S REPRESENTATION - EXTERIOR MAY VARY



## STANDARD FEATURES:

- ✓ 3 bedrooms
- ✓ Cathedral ceilings
- ✓ Open concept entrance
- ✓ Spacious dining nook features a bright window & a french door
- ✓ Master bedroom features a 3 pc. bath & large walk-in closet
- ✓ Main floor laundry
- ✓ Direct access from garage

## OPTIONAL FEATURES:

- ✓ Fireplace
- ✓ Basement development

## For more information contact

Doug	Lori	Al
Giesbrecht	Van Woert	Giesbrecht
306-529-6161	306-737-1070	306-737-2863

[www.giesbrechtteam.ca](http://www.giesbrechtteam.ca)



progressive  
HOME WARRANTY SOLUTIONS INC.



Crawford Homes Limited

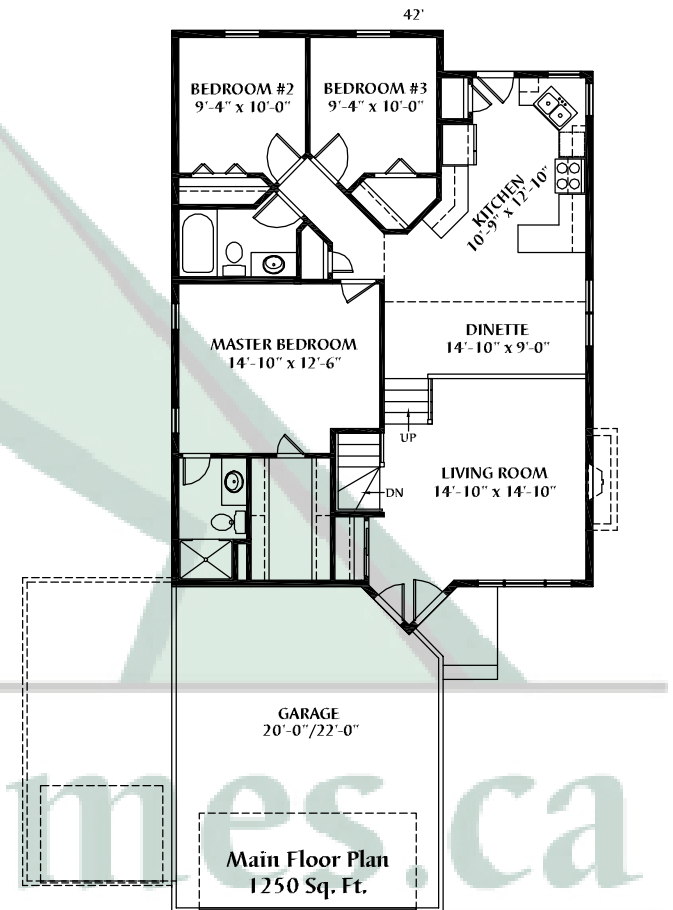
Regina, Canada

# The Nottingham V-T

## Bungalow - 1250 Sq. Ft.



ARTIST'S REPRESENTATION - EXTERIOR MAY VARY



### STANDARD FEATURES:

- ✓ 3 bedrooms
- ✓ Master bedroom features large walk-in closet & ensuite w/ over sized shower
- ✓ Walk-in closet to bedroom #3
- ✓ Work peninsula to kitchen

### OPTIONAL FEATURES:

- ✓ Fireplace
- ✓ Third garage bay
- ✓ Basement development

306.525.9801



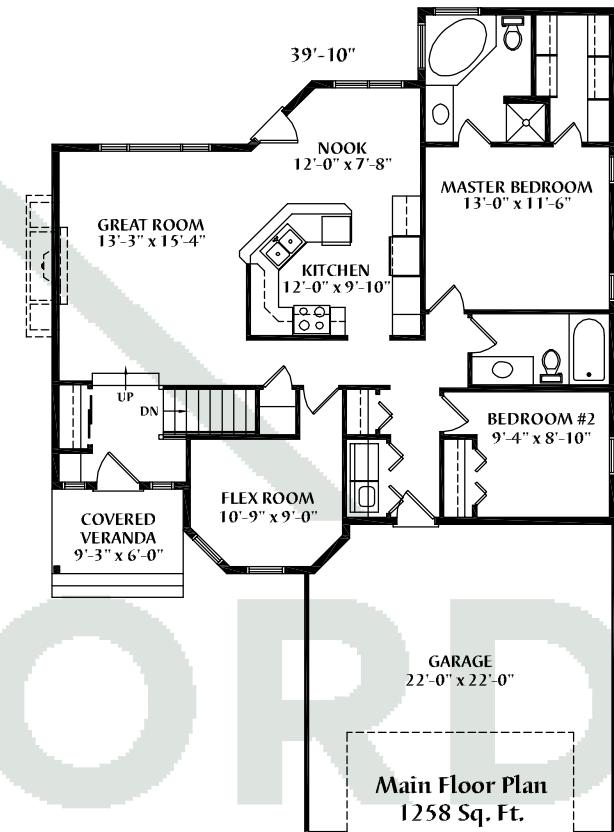
Crawford Homes Limited 306.525.9801 Regina, Canada

# The Jasper Jr.

Bungalow - 1258 Sq. Ft.



ARTIST'S REPRESENTATION - EXTERIOR MAY VARY



## STANDARD FEATURES:

- ✓ 2 bedrooms + flex room
- ✓ Master bedroom features 4 pc. bathroom and walk-in closet
- ✓ 2 bathrooms
- ✓ Main floor laundry
- ✓ Peninsula to kitchen c/w eat up counter
- ✓ Large great room
- ✓ Direct access from garage
- ✓ Covered verandah

## OPTIONAL FEATURES:

- ✓ Fireplace
- ✓ Basement development

## For more information contact

Doug	Lori	Al
Giesbrecht	Van Woert	Giesbrecht
306-529-6161	306-737-1070	306-737-2863

[www.giesbrechtteam.ca](http://www.giesbrechtteam.ca)



Crawford Homes Limited

Regina, Canada

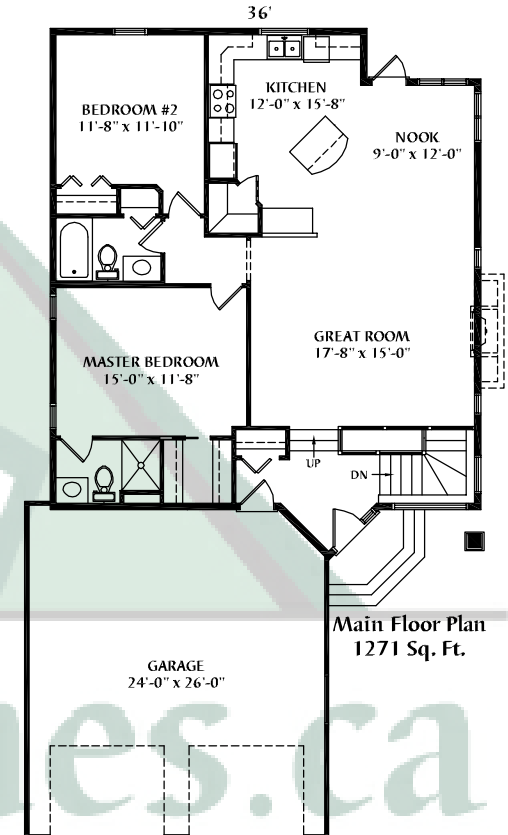


# The Jayden 11

## Bungalow - 1271 Sq. Ft.



ARTIST'S REPRESENTATION - EXTERIOR MAY VARY



### STANDARD FEATURES:

- ✓ 2 bedroom
- ✓ Master bedroom features over-sized shower in ensuite & walk-in closet
- ✓ Kitchen has functional work island w/ eat up counter & corner pantry
- ✓ Open stairwell to basement
- ✓ Spacious great room
- ✓ Direct access from garage

### OPTIONAL FEATURES:

- ✓ Fireplace
- ✓ Basement development

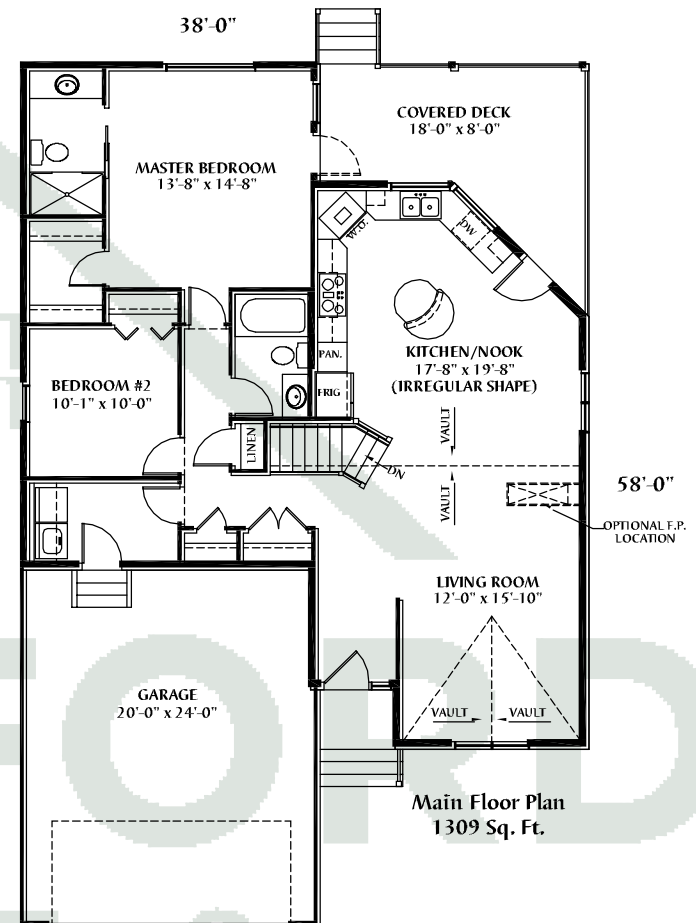
306.525.9801



Crawford Homes Limited 306.525.9801 Regina, Canada

# The Okanagan 11B

Bungalow- 1309 Sq. Ft.



## STANDARD FEATURES:

- ✓ 2 bedrooms
- ✓ Cathedral ceiling
- ✓ Open stairwell c/w railing
- ✓ Master suite c/w walk-in closet & 3 pc. bath featuring large vanity & 60" shower
- ✓ Spectacular kitchen/nook combination c/w island & opens onto covered back deck area
- ✓ Main floor laundry in mud room
- ✓ Direct access from garage

## OPTIONAL FEATURES:

- ✓ Built-in appliances
- ✓ Fireplace
- ✓ Deck off Master and Kitchen/Nook
- ✓ Basement development
- ✓ French door off Master to covered deck
- ✓ Full stone front facade

## For more information contact

Doug	Lori	Al
Giesbrecht	Van Woert	Giesbrecht
306-529-6161	306-737-1070	306-737-2863

[www.giesbrechtteam.ca](http://www.giesbrechtteam.ca)



Crawford Homes Limited

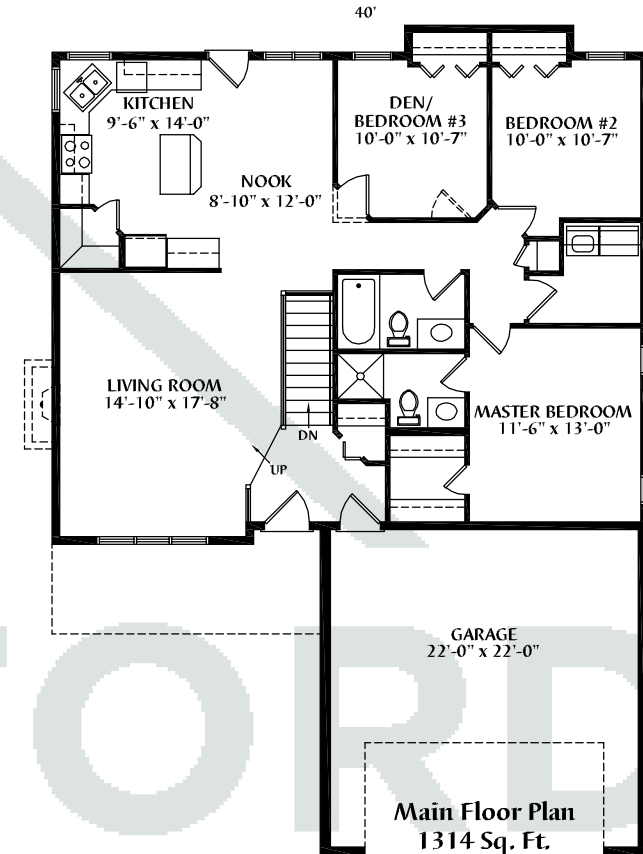
Regina, Canada

# The Cascade

## Bungalow - 1314 Sq. Ft.



ARTISTS REPRESENTATION - EXTERIOR MAY VARY



### STANDARD FEATURES:

- ✓ 3 bedrooms
- ✓ Cathedral ceiling
- ✓ Open stairwell c/w railing
- ✓ Kitchen includes a work island & corner pantry
- ✓ Nook area overlooks back yard
- ✓ Master suite features a walk-in closet & 3 pc. bath c/w larger 36" shower
- ✓ Main floor laundry from garage
- ✓ 22' x 22' garage

### OPTIONAL FEATURES:

- ✓ Fireplace
- ✓ Basement development
- ✓ Larger garage
- ✓ Front verandah

### For more information contact

Doug Giesbrecht 306-529-6161	Lori Van Woert 306-737-1070	Al Giesbrecht 306-737-2863
------------------------------------	-----------------------------------	----------------------------------

[www.giesbrechtteam.ca](http://www.giesbrechtteam.ca)



progressive  
HOME WARRANTY SOLUTIONS INC.



Crawford Homes Limited

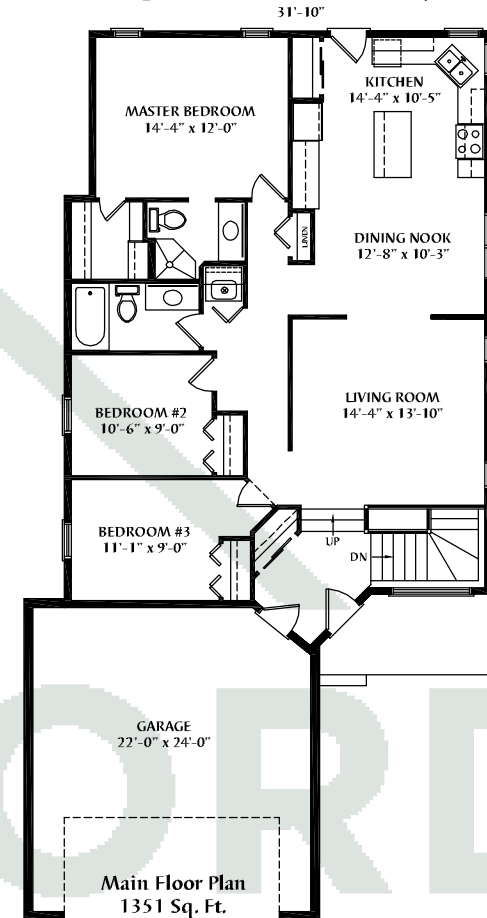
Regina, Canada

# The Marian II

## Bungalow - 1351 Sq. Ft.



ARTIST'S REPRESENTATION - EXTERIOR MAY VARY



### STANDARD FEATURES:

- ✓ 3 Bedroom open floor plan
- ✓ Cathedral ceiling
- ✓ Large sunken foyer
- ✓ Beautiful open staircase
- ✓ Huge front window over stairwell c/w transom
- ✓ Large living room c/w archway into dining nook
- ✓ Modern kitchen c/w an island
- ✓ Master bedroom c/w 3 pc. ensuite & walk-in closet
- ✓ Main floor stackable laundry
- ✓ Direct access from garage to house

### OPTIONAL FEATURES:

- ✓ Fireplace
- ✓ Covered front verandah
- ✓ 22' x 24' attached garage (as shown)
- ✓ Basement development

### For more information contact

Doug	Lori	Al
Giesbrecht	Van Woert	Giesbrecht
306-529-6161	306-737-1070	306-737-2863

[www.giesbrechtteam.ca](http://www.giesbrechtteam.ca)



progressive  
HOME WARRANTY SOLUTIONS INC.



Crawford Homes Limited

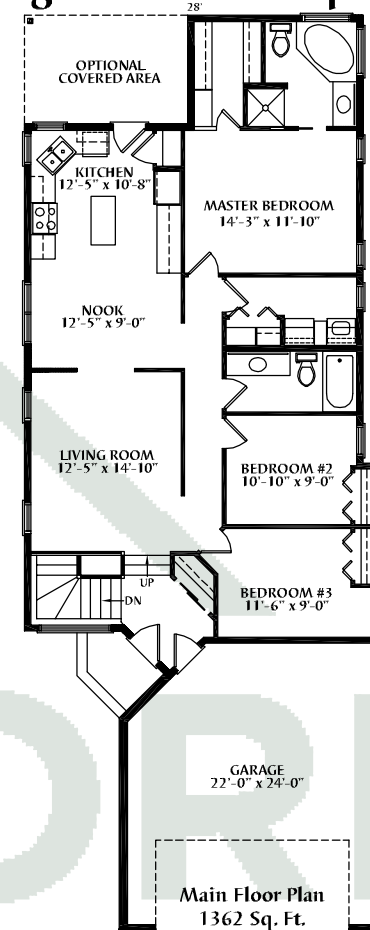
Regina, Canada

# The Marian III

## Bungalow - 1362 Sq. Ft.



ARTIST'S REPRESENTATION - EXTERIOR MAY VARY



### STANDARD FEATURES:

- ✓ 3 bedroom open floor plan
- ✓ Cathedral ceiling
- ✓ Large sunken foyer
- ✓ Beautiful open staircase
- ✓ Huge front window over stairwell c/w transom window
- ✓ Large living room c/w archway into dining nook
- ✓ Modern kitchen c/w an island
- ✓ Master suite c/w walk-in closet & a 4 pc. bath featuring a jetted tub
- ✓ Large main floor laundry room
- ✓ 22' x 24' attached garage
- ✓ Direct access from garage

### OPTIONAL FEATURES:

- ✓ Fireplace
- ✓ Full brick front (as shown)
- ✓ Covered deck area
- ✓ Basement development

### For more information contact

Doug	Lori	Al
Giesbrecht	Van Woert	Giesbrecht
306-529-6161	306-737-1070	306-737-2863

[www.giesbrechtteam.ca](http://www.giesbrechtteam.ca)

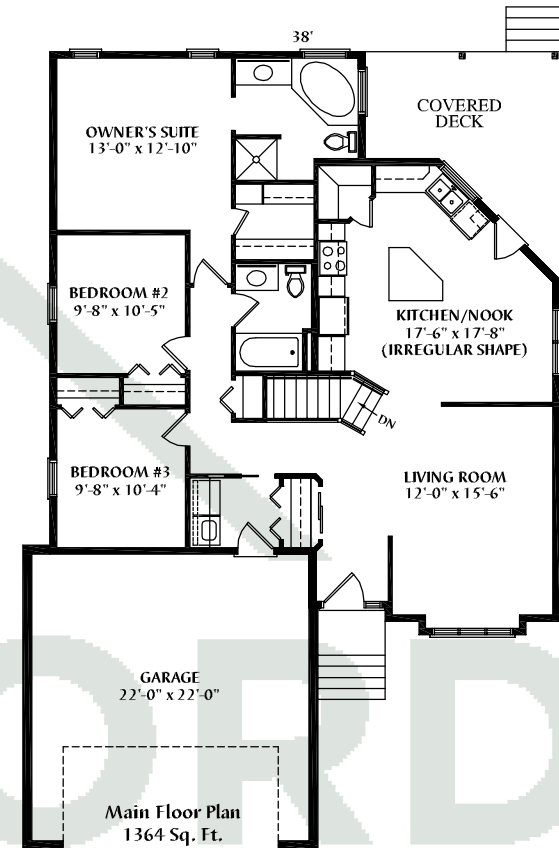


Crawford Homes Limited

Regina, Canada

# The Okanagan

## Bungalow- 1364 Sq. Ft.



### STANDARD FEATURES:

- ✓ 3 bedrooms
- ✓ Cathedral ceiling
- ✓ Open stairwell c/w railing
- ✓ Master suite c/w walk-in closet & a 4 pc. bath featuring a jetted tub
- ✓ Spectacular kitchen/nook combination c/w island
- ✓ Main floor laundry in mud room
- ✓ Direct access from garage

### OPTIONAL FEATURES:

- ✓ Built-in appliances
- ✓ Fireplace
- ✓ Basement development

### For more information contact

Doug	Lori	Al
Giesbrecht	Van Woert	Giesbrecht
306-529-6161	306-737-1070	306-737-2863

[www.giesbrechtteam.ca](http://www.giesbrechtteam.ca)



progressive  
HOME WARRANTY SOLUTIONS INC.



Crawford Homes Limited

Regina, Canada

# The Jayden XL

## Bungalow - 1370 Sq. Ft.



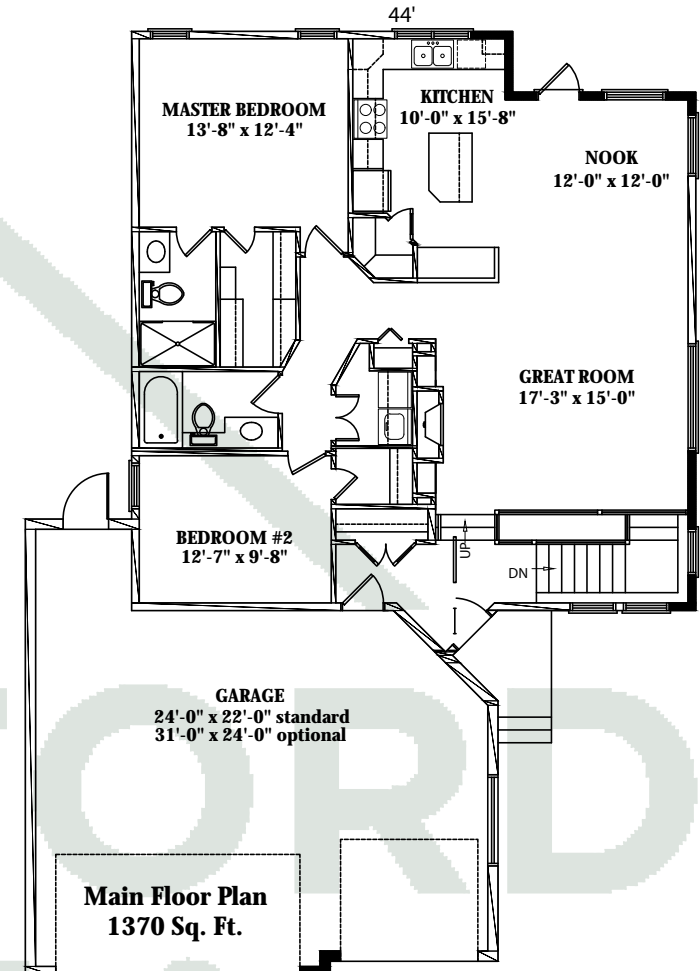
ARTIST'S REPRESENTATION - EXTERIOR MAY VARY

### STANDARD FEATURES:

- ✓ 2 bedroom open floor plan w/ vaulted ceilings to nook, kitchen & great room
- ✓ Sunken foyer w/ an open staircase & oversized windows to stairwell
- ✓ Kitchen features island, eating bar, abundance of counter-top & corner pantry
- ✓ French door from nook to covered area (deck optional)
- ✓ Master suite c/w large walk-in closet, 60" shower w/ seat
- ✓ Direct access from garage to house
- ✓ 24' X 22' attached garage

### OPTIONAL FEATURES:

- ✓ Fireplace
- ✓ 31'x24' or larger garage
- ✓ Basement development
- ✓ Upgraded garage doors w/ windows



### For more information contact

Doug	Lori	Al
Giesbrecht	Van Woert	Giesbrecht
306-529-6161	306-737-1070	306-737-2863

[www.giesbrechtteam.ca](http://www.giesbrechtteam.ca)



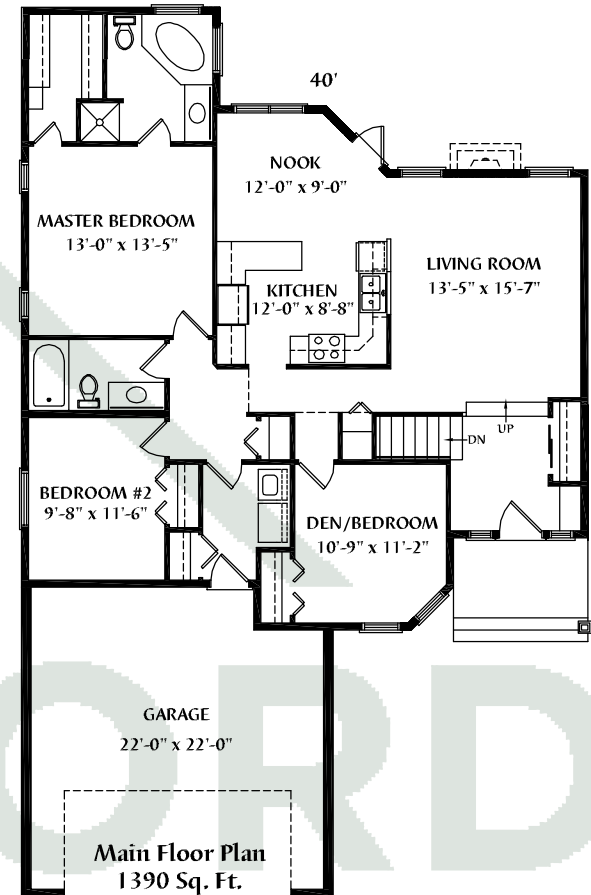
Crawford Homes Limited Regina, Canada

# The Jasper

Bungalow - 1390 Sq. Ft.



ARTIST'S REPRESENTATION - EXTERIOR MAY VARY



## STANDARD FEATURES:

- ✓ Cathedral ceilings
- ✓ Large vaulted entrance
- ✓ Two/three bedrooms on main floor
- ✓ Unique front angled den
- ✓ Large master suite w/ walk-in closet
- ✓ 4 pc. master ensuite features a corner jetted tub
- ✓ Spacious nook w/ direct access to covered area (deck optional)
- ✓ Covered front entry
- ✓ Main floor laundry/mud room
- ✓ Two car garage
- ✓ Direct access from garage

## OPTIONAL FEATURES:

- ✓ Fireplace
- ✓ Basement Development

## For more information contact

Doug	Lori	Al
Giesbrecht	Van Woert	Giesbrecht
306-529-6161	306-737-1070	306-737-2863

[www.giesbrechtteam.ca](http://www.giesbrechtteam.ca)



Crawford Homes Limited

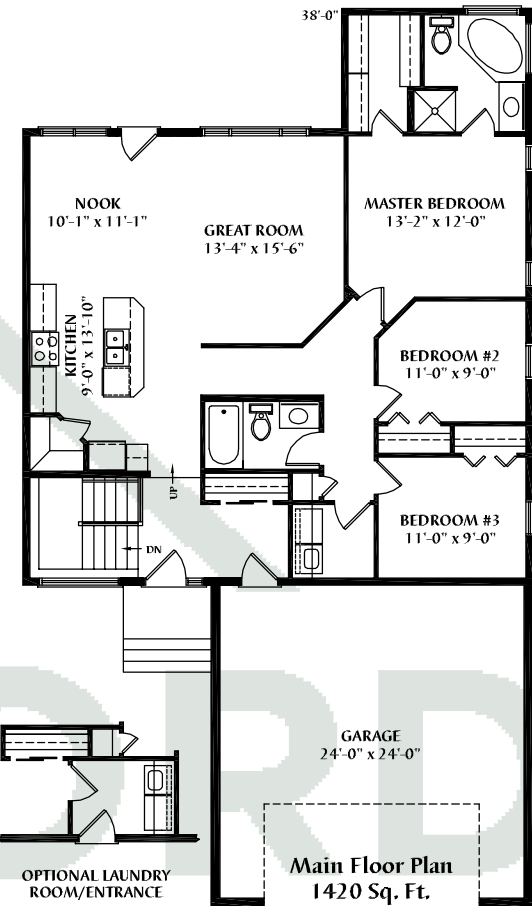
Regina, Canada



# The Sterling Bungalow - 1420 Sq. Ft.



ARTIST'S REPRESENTATION - EXTERIOR MAY VARY



## STANDARD FEATURES:

- ✓ 9' ceilings w/ transom windows
- ✓ Sunken front entrance
- ✓ Galley style kitchen w/ large island & corner pantry
- ✓ 3 main floor bedrooms
- ✓ Master bedroom features a walk-in closet, 4pc. ensuite including a corner jet tub & separate shower
- ✓ Main floor laundry
- ✓ 24'x24' garage

## OPTIONAL FEATURES:

- ✓ Cathedral ceilings (8' wall height)
- ✓ Optional laundry room/entrance
- ✓ Covered area off nook
- ✓ Fireplace
- ✓ Basement development

## For more information contact

Doug Giesbrecht 306-529-6161	Lori Van Woert 306-737-1070	Al Giesbrecht 306-737-2863
------------------------------------	-----------------------------------	----------------------------------

[www.giesbrechtteam.ca](http://www.giesbrechtteam.ca)



Crawford Homes Limited

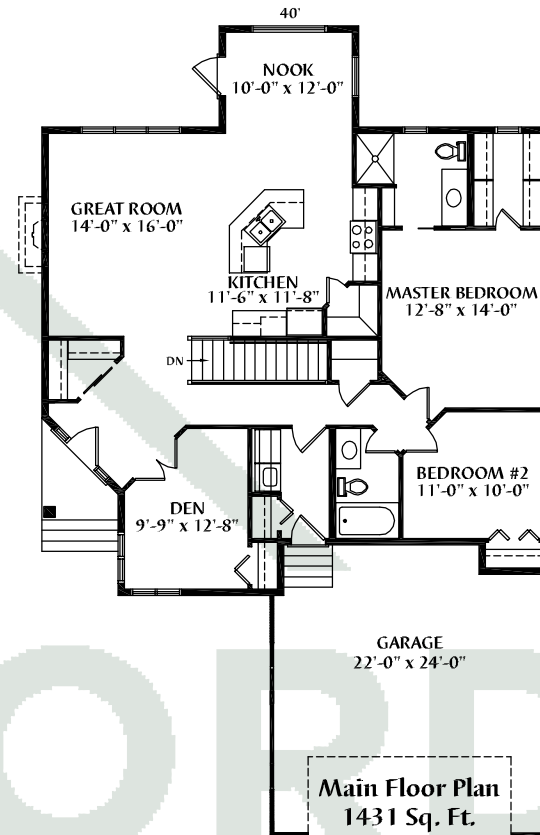
Regina, Canada

# The Alexander II

## Bungalow - 1431 Sq. Ft.



ARTIST'S REPRESENTATION - EXTERIOR MAY VARY



### STANDARD FEATURES:

- ✓ 9' ceilings to main floor
- ✓ Main floor laundry/mudroom c/w direct access from garage
- ✓ Open stairwell c/w rail
- ✓ Master suite c/w 3 pc. bath & walk-in closet
- ✓ Kitchen c/w corner pantry & large island
- ✓ Front entry c/w walk-in closet
- ✓ Walk-in linen closet
- ✓ 22' x 24' attached two car garage

### OPTIONAL FEATURES:

- ✓ Fireplace to great room
- ✓ Garage doors to side
- ✓ Basement development

### For more information contact

Doug	Lori	Al
Giesbrecht	Van Woert	Giesbrecht
306-529-6161	306-737-1070	306-737-2863

[www.giesbrechtteam.ca](http://www.giesbrechtteam.ca)



Crawford Homes Limited

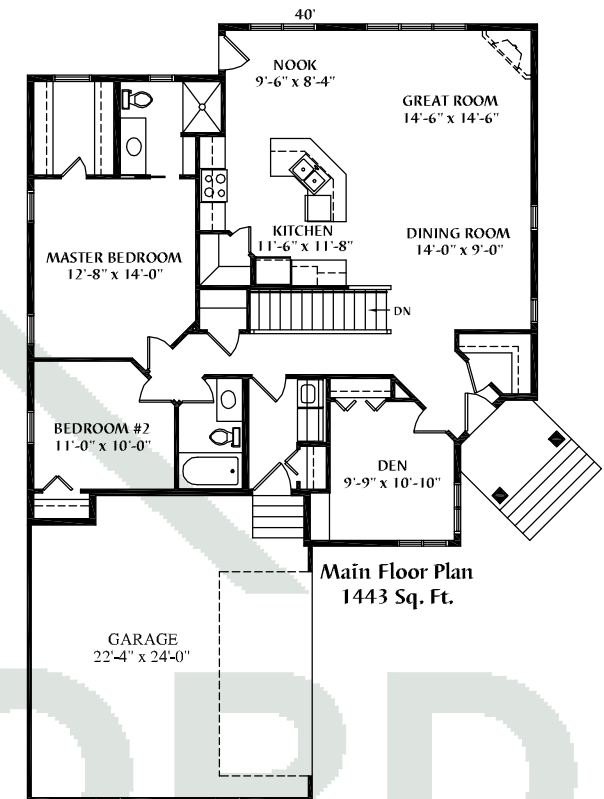
Regina, Canada

# The Alexander

## Bungalow - 1443 Sq. Ft.



ARTIST'S REPRESENTATION - EXTERIOR MAY VARY



### STANDARD FEATURES:

- ✓ Ideal for corner lot
- ✓ 9' ceilings to main floor
- ✓ Main floor laundry/mudroom c/w direct access from garage
- ✓ Open stairwell c/w rail
- ✓ Master suite c/w 3 pc. bath & walk-in closet
- ✓ Kitchen c/w large island & corner pantry
- ✓ Front entry c/w walk-in closet
- ✓ Walk-in linen closet
- ✓ 22' x 24' attached two car garage

### OPTIONAL FEATURES:

- ✓ Fireplace to great room
- ✓ Garage doors to front
- ✓ Basement development

### For more information contact

Doug	Lori	Al
Giesbrecht	Van Woert	Giesbrecht
306-529-6161	306-737-1070	306-737-2863

[www.giesbrechtteam.ca](http://www.giesbrechtteam.ca)



Crawford Homes Limited

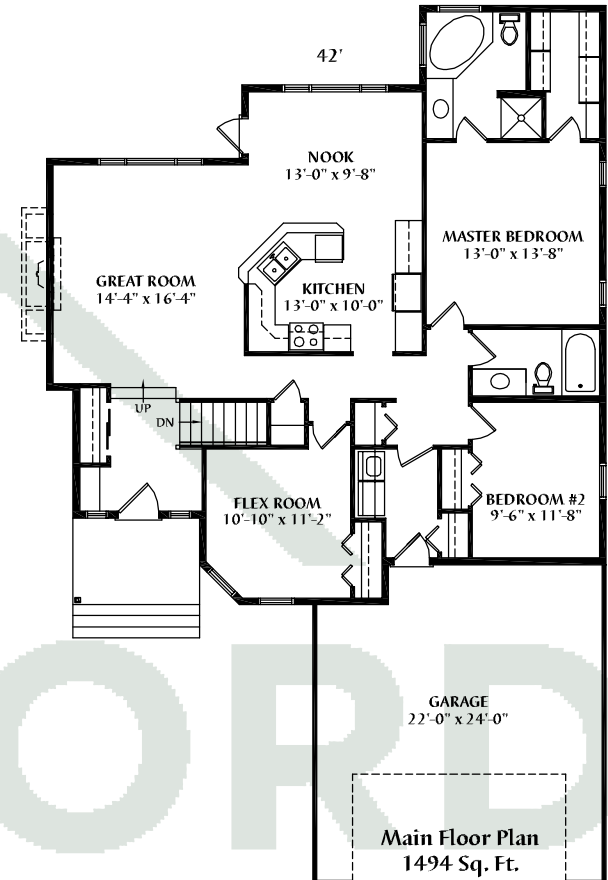
Regina, Canada

# The Jasper II

Bungalow - 1494 Sq. Ft.



ARTIST'S REPRESENTATION - EXTERIOR MAY VARY



## STANDARD FEATURES:

- ✓ Cathedral ceilings
- ✓ Sunken vaulted foyer
- ✓ 2/3 bedrooms on main floor
- ✓ Unique front angled den
- ✓ Large master bedroom features walk-in closet & 4 pc ensuite w/ corner jetted tub
- ✓ Spacious nook w/ direct access to covered area (future deck)
- ✓ Covered front entry
- ✓ Main floor laundry/mud room
- ✓ 2 car garage
- ✓ Direct access from garage

## OPTIONAL FEATURES:

- ✓ Fireplace
- ✓ Basement development
- ✓ Larger pantry

## For more information contact

Doug	Lori	Al
Giesbrecht	Van Woert	Giesbrecht
306-529-6161	306-737-1070	306-737-2863

[www.giesbrechtteam.ca](http://www.giesbrechtteam.ca)



Crawford Homes Limited

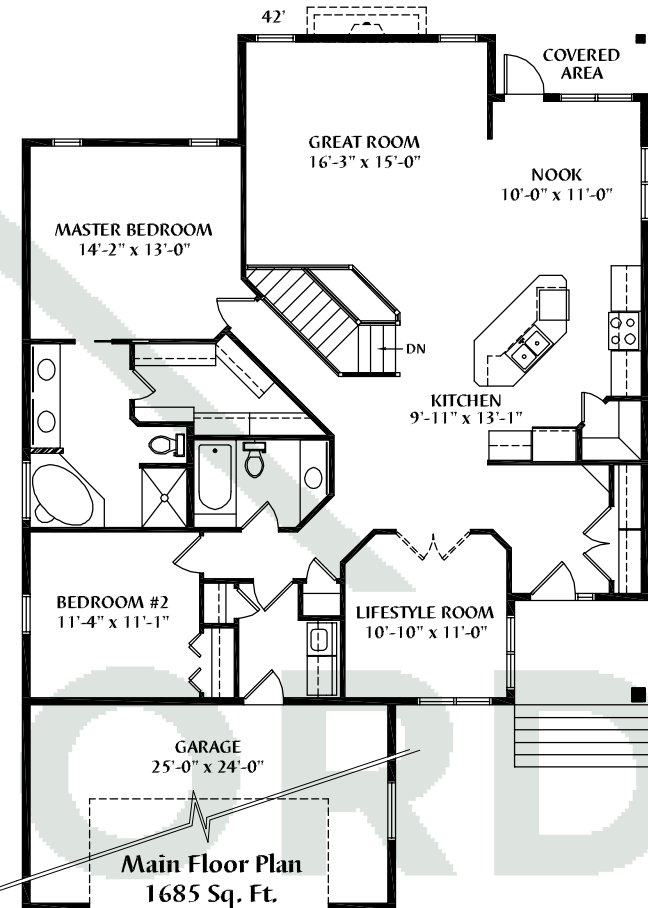
Regina, Canada

# The Bellingham

Bungalow - 1685 Sq. Ft.



ARTIST'S REPRESENTATION - EXTERIOR MAY VARY



## STANDARD FEATURES:

- ✓ Large open kitchen and nook
- ✓ Kitchen highlights a corner pantry, long island w/ cooktop & area for a wall oven
- ✓ Open stairwell c/w wood railing
- ✓ Nook leads to covered area
- ✓ 2 bedrooms & a lifestyles room
- ✓ Ensuite includes a corner jetted tub, separate 48" shower, two sinks & a large walk-in closet
- ✓ 22'x22' garage c/w direct entry
- ✓ Main floor laundry

## OPTIONAL FEATURES:

- ✓ Fireplace to great room
- ✓ Double doors to lifestyles room
- ✓ 10' high main floor ceilings
- ✓ Basement development
- ✓ Larger garage
- ✓ Exterior stone veneer and accents

## For more information contact

Doug	Lori	Al
Giesbrecht	Van Woert	Giesbrecht
306-529-6161	306-737-1070	306-737-2863

[www.giesbrechtteam.ca](http://www.giesbrechtteam.ca)



Crawford Homes Limited

Regina, Canada

# The Mesquite

Bungalow - 2593 Sq. Ft.



ARTIST'S REPRESENTATION - EXTERIOR MAY VARY

## STANDARD FEATURES:

- ✓ A true executive bungalow experience
- ✓ Covered front verandah
- ✓ 10 ft ceilings and 8 ft doors
- ✓ Chef's kitchen with almost endless counter-top, built-in appliances and breakfast bar able to accommodate up to seven people
- ✓ 3 bedrooms and flex room on main floor. Master bedroom features an enormous walk-in closet & 5 pcs. ensuite which includes a soaker tub, tile & glass shower, and private water closet
- ✓ Main floor laundry
- ✓ Breakfast nook plus formal dining
- ✓ 22' x 22' double car garage

## OPTIONAL FEATURES:

- ✓ Ideal for walk-out lots
- ✓ Fireplace
- ✓ Basement development (add almost 2400 sq ft)

## For more information contact

Doug	Lori	Al
Giesbrecht	Van Woert	Giesbrecht
306-529-6161	306-737-1070	306-737-2863

[www.giesbrechtteam.ca](http://www.giesbrechtteam.ca)

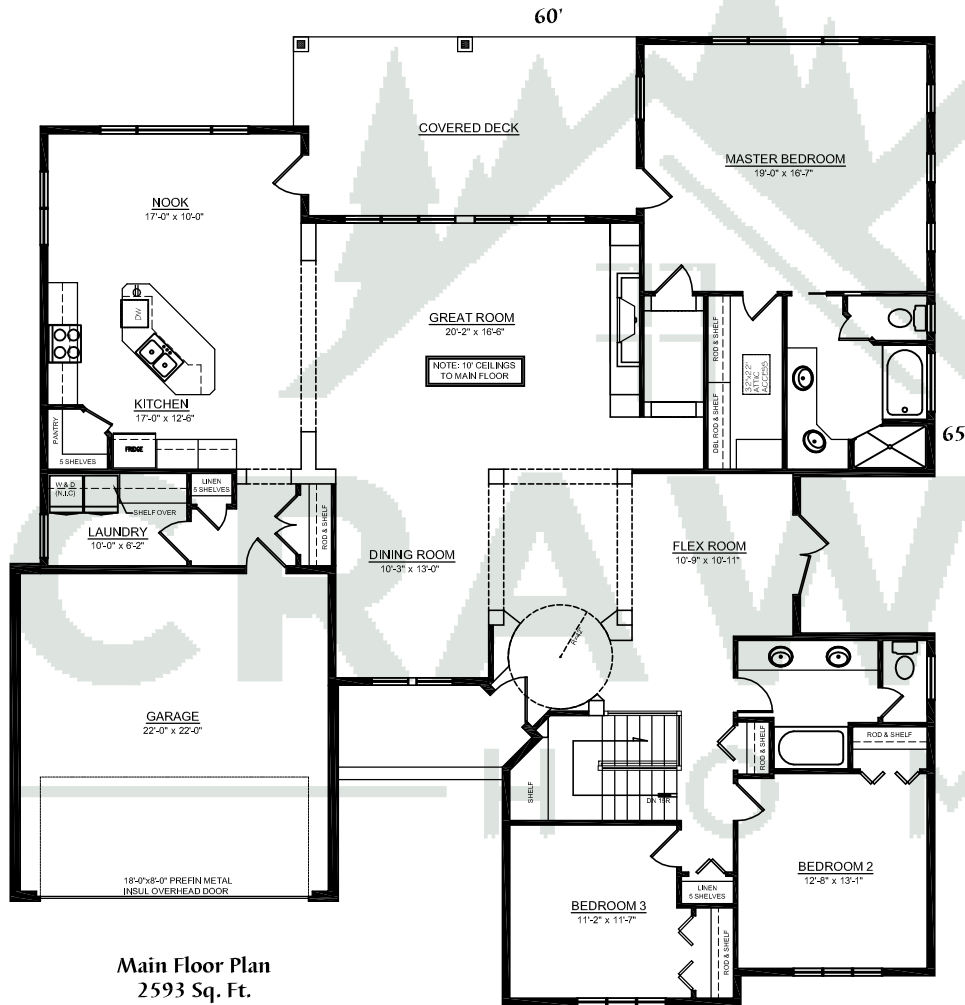


Crawford Homes Limited

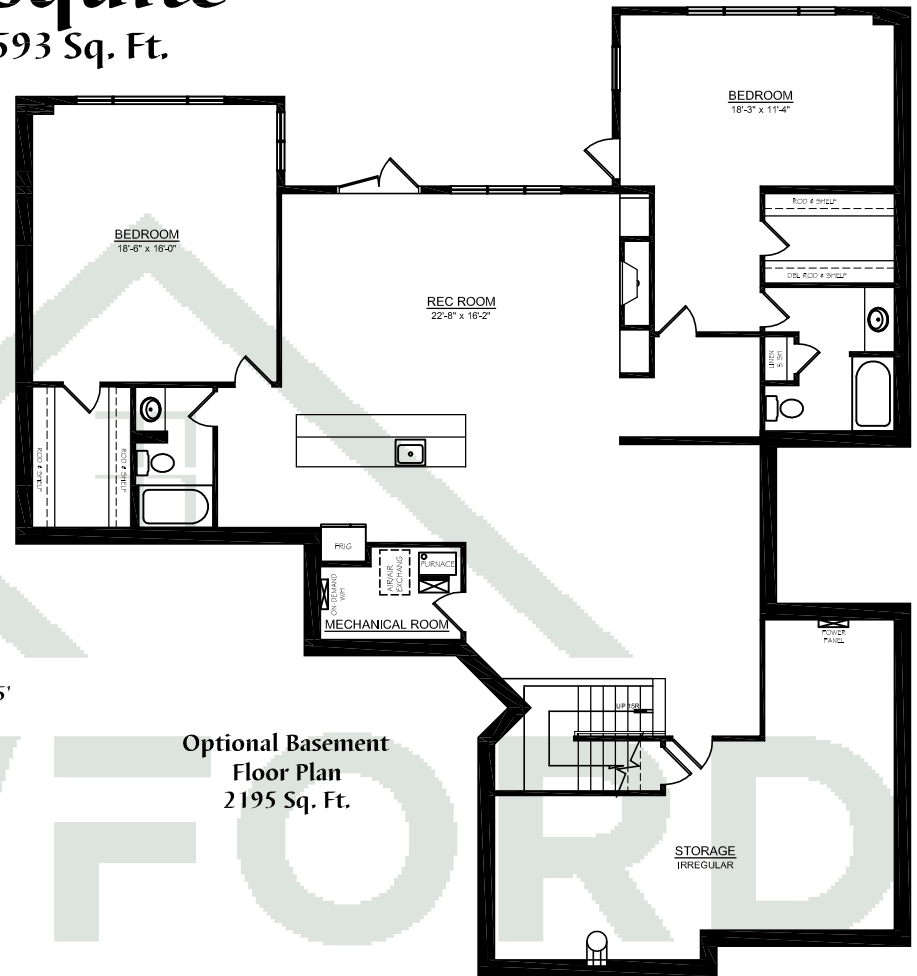
Regina, Canada

# The Mesquite

Bungalow - 2593 Sq. Ft.



Main Floor Plan  
2593 Sq. Ft.



Optional Basement  
Floor Plan  
2195 Sq. Ft.

**For more information contact**

Doug Giesbrecht 306-529-6161	Lori Van Woert 306-737-1070	Al Giesbrecht 306-737-2863
------------------------------------	-----------------------------------	----------------------------------

[www.giesbrechtteam.ca](http://www.giesbrechtteam.ca)

Crawford Homes Limited Regina, Canada